



**WAYLAND BAPTIST UNIVERSITY  
SCHOOL OF RELIGION AND PHILOSOPHY  
WBUONLINE**

**Wayland Mission Statement:** Wayland Baptist University exists to educate students in an academically challenging, learning-focused, and distinctively Christian environment for professional success, and service to God and humankind.

**Course Title and Number:** RLG N 5346 – Christian Theology

**Term:** Fall 2017

**Name of Instructor:** Dr. Ben D. Craver, Professor of Religion and Philosophy

**Office Phone Number and WBU Email Address:** 210-826-7595; [craverb@wbu.edu](mailto:craverb@wbu.edu)

**Office Hours, Building, and Location:** Office at 11550 IH 35 North; San Antonio, Texas  
Hours: Monday – Thursday, 9:00 am – 5:00 pm; Friday, 9:00 am – 4:00 pm.

**Class Meeting Time and Location:** Online class; week of August 21 – week of October 30

**Catalog Description:** Research in the nature, source, and scope of the doctrines of Christianity.  
Prerequisite(s): RLG N 4314 or RLG N 5314 or equivalent.

**Required Textbook(s) and/or Resource Material:**

- *Theology for the Community of God*, by Stanley J. Grenz; Wm. B. Eerdmans Publishing Company (2000); ISBN-10: 0802847552.
- *Who Needs Theology? An Invitation to the Study of God*, by Stanley J. Grenz and Roger E. Olson; IVP Academic (1996); ISBN-10: 0830818782

**NOTE:** If you have not taken **RLGN 0001 Theological Research and Writing Lab** as an undergraduate or **RLGN 4300 Research and Writing for Religious Studies**, it would be in your **best interest** to enroll this term. These classes teach you how to carry out research on theological topics and, most importantly, the **proper format** in which the paper must appear.



**Neither APA nor MLA will be accepted.** Papers appearing in either of those formats will not be graded, but instead returned to the student for proper form. Points will be deducted for lateness.

**Course Outcome Competencies:**

1. Demonstrate knowledge of major doctrinal positions, including identification of relevant biblical passages, chief exponents, and key theological terms.
2. Articulate clearly his/her own personal beliefs in relation to historic Christian doctrines.
3. Identify meaningful ways to relate theology to the ministry of the church.

**Attendance Requirements:** My expectation is that all students participate in all required instructional activities in their courses. Online courses are no different in this regard; however, the University defines participation in a different manner. **Student “attendance” in an online course is defined as active participation in the course** as described in the course syllabus. Instructors in online courses are responsible for providing students with clear instructions for how they are required to participate in the course. Additionally, instructors are responsible for incorporating specific instructional activities within their course and will have, at a minimum, weekly mechanisms for documenting student participation. These mechanisms may include, but are not limited to, participating in a weekly discussion board, submitting assignments in Blackboard, or communicating with the instructor.

Students aware of necessary absences must inform the professor with as much advance notice as possible in order to make appropriate arrangements. **Any student absent 25 percent or more of the online course, i.e., non-participatory during 3 or more weeks of an 11 week term, MAY [and likely WILL] receive an F for that course.** Instructors may also file a **Report of Unsatisfactory Progress (ROUP)** for students with excessive non-participation.

Any student who has not actively participated in an online class prior to the census date for any given term is considered a “no-show” and will be administratively withdrawn from the class without record. **To be counted as actively participating, it is NOT sufficient simply to log in and view the course. The student must be submitting work as described in the course syllabus.** Additional attendance and participation policies for each course, as defined by the instructor in the course syllabus, are considered a part of the university’s attendance policy.

**Disability Statement:** In compliance with the Americans with Disabilities Act of 1990 (ADA), it is the policy of Wayland Baptist University that no otherwise qualified person with a disability be excluded from participation in, be denied the benefits of, or be subject to discrimination under any educational program or activity in the university. The Coordinator of Counseling Services serves as the coordinator of students with a disability and should be contacted concerning accommodation requests at (806) 291- 3765. Documentation of a disability must accompany any request for accommodations.”

**Course Requirements and Grading Criteria:**

<b>1. Participation in Discussion Boards*</b>	(10 pts per DB) 90 pts
<b>2. Book Analysis*</b>	75 pts
<b>3. Midterm examination*</b>	100 pts
<b>4. Research Paper*</b>	100 pts
<b>5. Final Examination*</b>	100 pts
<hr/>	
<b>TOTAL 465 pts</b>	

\* Detailed information on how to complete these assignments follows in the syllabus.

### Schedule of Topics, Readings, Examinations, and Assignments:

<b>CHRISTIAN THEOLOGY</b>			
<b>1 - w/o* 21 Aug</b>	<b>L1: <i>The Nature, Sources, and Scope of Theology</i></b>	<b>^TCG, Intro</b>	<b>+DB1</b>
<b>2 - w/o 28 Aug</b>	<b>L2: <i>God, Revelation, and Creation</i></b>	<b>TCG, 1-2, 4-7</b>	<b>DB2</b>
<b>3 - w/o 4 Sept</b>	<b>L3: <i>The Person of Christ</i></b>	<b>TCG, 9-11</b>	<b>DB3</b>
<b>4 - w/o 11 Sept</b>	<b>L4: <i>The Work of Christ</i></b>	<b><u>Book Analysis due 16 Sept</u></b>	<b>TCG, 12</b>
<b>5 - w/o 18 Sept</b>	<b>MIDTERM EXAMINATION</b>		
<b>6 - w/o 25 Sept</b>	<b>L5: <i>The Holy Spirit</i></b>	<b>TCG, 13-14</b>	<b>DB5</b>
<b>7 - w/o 2 Oct</b>	<b>L6: <i>Salvation</i></b>	<b>TCG, 15-16</b>	<b>DB6</b>
<b>8 - w/o 9 Oct</b>	<b>L7: <i>The Nature of the Church</i></b>	<b>TCG, 17-18</b>	<b>DB7</b>
<b>9 - w/o 16 Oct</b>	<b>L8: <i>The Mission of the Church</i></b>	<b><u>Research Paper due 21 Oct</u></b>	<b>TCG, 19-20</b>
<b>10 - w/o 23 Oct</b>	<b>L9: <i>Eschatology</i></b>	<b>TCG, 21-24</b>	<b>DB9</b>
<b>11 - w/o 30 Oct</b>	<b>FINAL EXAMINATION</b>		
^TCG = Grenz, <i>Theology for the Community of God</i> and assigned chapters * = week of    + = Discussion Board (DB)			

### Course Evaluation (Method of Determining Grade)

#### Of a TOTAL of **465** possible points:

A	465-419 points	I	INCOMPLETE**
B	418-372 points	WP	WITHDRAWAL PASSING
C	371-325 points	WF	WITHDRAWAL FAILING
D	324-279 points	W	WITHDRAWAL
F	BELOW 279 points		

\*\*A grade of incomplete is changed if the deficiency is made up by midterm of the next regular semester; otherwise, it becomes "F". This grade is given only if circumstances beyond the student's control prevented completion of work during the semester enrolled and attendance requirements have been met. A grade of "CR" indicates that credit in semester hours was granted but no grade or grade points were recorded.

**Plagiarism:** Academic misconduct for which a student is subject to penalty includes all forms of cheating, such as illicit possession of examinations or examination materials, forgery, or plagiarism. Plagiarism is the presentation of the work of another as one's own work. It is the student's responsibility to be familiar with penalties associated with plagiarism stated in the catalog.

You can avoid **PLAGIARISM** for the most part simply by citing your sources. In this class, you will be writing a research paper. Research involves necessarily searching through various sources for the information in your paper. Again, just cite the source and you won't be guilty of plagiarism.

More about sources, paper requirements, etc., on the following pages!

**REMEMBER . . . ONLY YOU CAN**



**RLGN 5346—CHRISTIAN THEOLOGY**  
***GUIDELINES FOR BOOK ANALYSIS***

These guidelines are to be used in preparing your analysis of *Who Needs Theology? An Invitation to the Study of God*, by Grenz and Olson. Carefully consider each directive as the analysis progresses.

- **General:**

The paper shall be at least **2,000 but no more than 2,500 words**, double-spaced, Times New Roman 12 pt font, based on information found in your reading. For matters of style and form, consult WBU's *Digest of Writing* or, for more detail, Kate L. Turabian, *A Manual for Writers of Term Papers, Theses, and Dissertations*, 7<sup>th</sup> ed. As religion students, you must follow this format. Remember, APA or MLA will NOT be accepted for any assignment!!

***Due date: End of the day, SATURDAY, 16 SEPT***

- **Substantive:**

It should be descriptive in approach that is, describe what you're reading. Focus on the thinking and conclusions of Grenz and Olson. As you write, select quotes which adequately characterize what they are trying to present and/or propose about theology. To reference the quote, simply put page numbers in parentheses at the end of the sentence (76). What about the categories of "dogma, doctrine, and opinion"? Above all, what is the answer to the question *Who Needs Theology?*

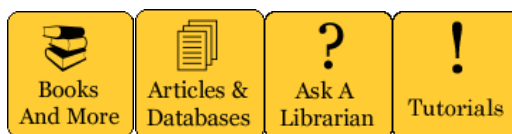
However, a book review means that you interact with the author. Where do you think they are right? Wrong? What do they not cover adequately? What do they fail to explain to your satisfaction? Based on previous readings and/or information from other courses, etc., how are their conclusions similar or different?

Because none of us is a theological scholar, you must check out what other reviewers may have written about this book and the authors' conclusions. *Enter as a footnote and in a bibliography any of these reviews.* To find them, visit the Wayland LRC (use link below) and look for other book reviews. Most scholarly journals contain these sorts of reviews, too, if you have them nearby. Please reference informally, in parentheses, the various other reviewers you read.

In your concluding comments, identify at least three, but no more than five, meaningful ways to relate theology *to the ministry of the church.*

- **Wayland Baptist University LRC:**

WBU has a terrific library with terrific personnel ready to help in any way. Please ask the library about anything you need. They are there to help! I have had excellent results with our library. They will find and mail a book to you, post-paid with free return! And, they'll email an article to you complete with proper documentation! Click on one of the links below:



**RLGN 5346—CHRISTIAN THEOLOGY**  
***GUIDELINES FOR RESEARCH PAPER***

Use these guidelines in preparing your Research Paper. Carefully consider each directive as the review progresses.

- **General:**

The paper shall be at least 3,500 words but no more than 4,500 words, double-spaced, Times New Roman 12 pt font, based on information found from your research. For matters of style and form, consult WBU's *Digest of Writing* or Kate L. Turabian, *A Manual for Writers of Term Papers, Theses, and Dissertations*, 7<sup>th</sup> ed. As religion students, you must follow this format. **APA or MLA will NOT be accepted for any assignment!**

***Due date: End of the day, SATURDAY, 21 OCT***

- **Substantive:**

The research paper focuses on a particular issue related to theological development. Like the book review, it should be *descriptive* in approach that is, describe the issue or doctrine assigned from a ***theological perspective***.

**Sources are absolutely essential.** Select them with great care; they ***must be*** of a scholarly nature and support your topic. Be sure to utilize and cite sources that specifically address the topic directly, not indirectly.

***Your textbook is a key source—use it!*** The Bible, albeit it is ***the*** source of theological study, will *not count* as a source.

**The following TOPIC is the assignment for EVERYONE in the course:**

**THE PROVIDENCE OF GOD:  
 A BIBLICAL, HISTORICAL AND THEOLOGICAL ANALYSIS**

***Please use the exact phrase above as the title to your paper.*** Also, be sure that you address each of these aspects of the providence of God; these three will serve as ***formal sections*** within the paper.

- ❶ **For the BIBLICAL section of the paper,** provide a thorough interpretation of **Gen 22:14**, which is *the* foundational verse for biblical providence. *You must use at least three commentaries for passage.*
- ❷ **For the HISTORICAL section of the paper,** be sure to address the follow historical figures and their view of divine providence:
  - **Augustine**, *The City of God* (online at CCEL, <http://www.ccel.org/ccel/schaff/npnf102.iv.html>)
  - **John Calvin**, *The Institutes* (online at CCEL, <http://www.ccel.org/ccel/calvin/institutes.pdf>)
- ❸ **For the SYSTEMATIC section of the paper,** *select only one of the following:* providence and faith, providence and creation, or providence and preservation, and formulate your systematic response based on what you discovered in the ***biblical section*** and with insights from the ***historical section***. I will be looking for one of those phrases followed by its definition and how it relates to your study.

**FOR INSIGHTS INTO AUGUSTINE AND CALVIN** (above), please see the books and articles section below. **Farley's book\*** will provide you with a good overview of their respective positions on the doctrine of providence. *I have attached it for you; it is on the left side of our class website page.*

The WBU Library can find **Farley's book** or any of the others regardless of how many of you may request it. They will simply find the book at other libraries and mail it to you. The service is FREE and the return postage provided. **I will accept NO EXCUSES for not finding books or articles.**

**FOR A THOROUGH LIST OF BOOKS AND ARTICLES** that will be helpful in writing your paper, click on the following link: <http://timmybrister.com/2006/05/bibliography-the-providence-of-god/>. Here you will find **88** books and **56** articles! What a goldmine!

This list is not a set of "easy" reads. It does, however, provide you with some key sources you may choose to use in your paper. In particular, try:

- Berkhouwer, G.C. *The Providence of God*. Grand Rapids: Eerdmans, 1952.
- **\*Farley, Benjamin W. *The Providence of God*. Grand Rapids: Baker, 1988.**
- George, Timothy. "Providence" in *Holman Bible Dictionary*. ed. Trent C. Butler, Nashville: Holman, 1991.
- Helm, Paul. *The Providence of God*. Downer's Grove, IL: InterVarsity, 1993.
- Parker, T.H.L. "Providence of God," in *Evangelical Dictionary of Theology*. ed. Walter A. Elwell. Grand Rapids: Baker, 1984.
- Vanhoozer, Kevin J. "Providence" in *Dictionary for Theological Interpretation of the Bible*. ed. Kevin J. Vanhoozer. Grand Rapids: Baker Academic, 2005.

**Please begin with your TEXTBOOK first.  
Then, go the DICTIONARIES for a concise look at providence.**

A few other **VERY IMPORTANT** matters:

- As noted above, all sources must be properly cited and comply with WBU's *Digest of Writing Instructions for Papers and Research Projects in the Division of Religion & Philosophy*. The WBU *Digest of Writing Instructions for Papers and Research Projects* may be accessed at:
  - [http://www.wbu.edu/academics/schools/religion\\_and\\_philosophy/student\\_help/documents/Digest.pdf](http://www.wbu.edu/academics/schools/religion_and_philosophy/student_help/documents/Digest.pdf)

**The following sources may *NOT* be used in this paper\*:**

- *Wikipedia*
- *Theopedia*
- Old and/or single volume biblical commentaries, such as *Matthew Henry, Jamieson-Faucett-Brown, Wycliffe Bible Commentary, MacArthur Bible Commentary, Moody Bible Commentary, Calvin, Schofield, and Spurgeon*. There are many more; contact me before you write your paper only to discover that your commentary is not a good choice.

The reason I don't want you using these commentaries should be obvious. They're old! There's more recently-written scholarship available for your use. Besides, single volume commentaries on the entire Bible cannot possibly contain as much detail as a single volume commentary on Genesis. Please, do not simply go online and find those dusty old commentaries; you will be penalized if you do.

\*You may and should use them to get ideas about the structure or outline of your paper!

The following items will be **heavily considered** when determining the paper's grade:

- **FORM**—how the preliminary parts, text, and reference matters within the paper adhere to acceptable scholarly standards as noted above (*you will be double-spacing these pages*). **25 points**
- **STYLE**—how the paper complies with proper rules of grammar, syntax, punctuation, and spelling. **25 points**
- **CONTENT**—how the paper addresses relevant, scholarly data related to the topic. Included here will be the adequate and judicious use of sources and the length of the text. **40 points**
- **PUNCTUALITY**—late papers will be penalized 10 points per week—*no exceptions for any reason, starting with **day one, minute one***. **10 points**

**RLGN 5346—CHRISTIAN THEOLOGY**  
**INFORMATION FOR DISCUSSION BOARDS**

**Discussion Boards (DBs)** will be provided for nine weeks, every week except the weeks of the midterm and final examinations. At 10 points each, the total points to earn are 90. The grade will be assessed as follows:



- Responded directly to question 4
- Provided substantive comments 4
- Utilized good grammar and style 2

As a graduate course, substantive comments are required for each DB. Substantive means that I will be expecting much, much more than a few sentences and much, much more than a simple, non-reflective answer.

I will also expect that you will compose, read, and re-read your comments for sense, accuracy, spelling, grammar, and matters of style. So, when you compose a response, put some thought into it. Over the years, I've read some which appear to have been written almost at the last minute with little thought. DBs are informal in nature, but I'm expecting some good thinking to go into your comments, all with good form.

What am I looking for? Specifically, I'm looking to see if you **ANSWER THE QUESTION(S)**. That may sound silly, but my experiences over the years have shown me that students often "beat around the bush" and respond to issues but not the question(s).

*So, make certain that you answer the question(s) posed in the posted DB. Also, if I offer a response with a questions, I'm expecting that you will answer it.*

As for word count, I'm expecting more than a few sentences as noted above; to be more specific, let's go with **350 - 400 words**. And, yes, I'll count.

I encourage you to make your responses in a timely manner. Any original response made after seven days of the posting, will be penalized 3 points; any made after ten days will receive a 0.



**RLGN 5346—CHRISTIAN THEOLOGY**  
**INFORMATION FOR EXAMINATIONS**

There will be ***TWO PROCTORED EXAMS***—a midterm and a final:

- **The midterm exam** is available *throughout the week of* ***18 SEPTEMBER*** closing end of the day ***24 SEPTEMBER*** and will cover the material from all previous lectures.
- **The final exam** is available *throughout the week of* ***30 OCTOBER*** closing end of the day ***5 NOVEMBER***, and will cover all lecture material *since* the midterm.

Both exams will have twenty-five *objective* questions, each worth four points; exams will be taken **on Blackboard with a proctor**.

You will have a total of **90 minutes** to complete the exam. Any time over and above 90 minutes will be penalized as follows\*:

- 91-95 minutes two points deducted
- 96-100 minutes four points deducted
- 101-105 minutes five points deducted
- 106-110 minutes seven points deducted
- 111 minutes and above ten points deducted

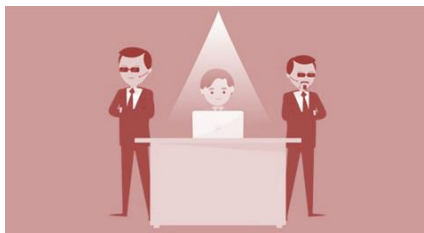
\*This means, of course, that you will *NOT* be kicked off Blackboard when the 90-minute time passes. Your time will be simply noted in order to assess any penalties.

Makeup exams will be permitted **ONLY** for excused absences, and **ONLY** if the student contacts the professor prior to the exam (except in emergency situations).

A **STUDY GUIDE** will be provided for both exams. Look through your lecture notes and answer those questions as succinctly and objectively as you can.

**NO NOTES OR STUDY MATERIALS ARE ALLOWED DURING THE EXAMINATIONS.**

**There is an important aspect of taking exams mentioned directly below;  
do not overlook it and get it done as soon as you can.**



**HOW DOES ONE FIND AND SECURE A PROCTOR?**

You must secure your own **WBU-authorized PROCTOR**. In order to do so, please click on the link: [http://www.wbu.edu/academics/online\\_programs/proctor/proctorrequest.htm](http://www.wbu.edu/academics/online_programs/proctor/proctorrequest.htm) and follow the simple instructions.

**Please do not delay doing this.** This time for the exam will come around sooner than you think and you **MUST** be ready! *He who hath ears, let him hear!*



## BIBLIOGRAPHY

Class, this readings list offers only a sample of the varied subjects and viewpoints in Christian theology. Some are classics and some recent. Maybe you can use some in your pilgrimage.

Baker, Charles F. *A Dispensational Theology*. Grand Rapids: Grace Bible College Publications, 1971. Ultradispensational.

Barth, Karl. *Church Dogmatics*. 5 Vols. Edinburgh: T. & T. Clark, 1936, 77. Neoorthodox.

Bloesch, Donald G. *Essentials of Evangelical Theology*. 2 vols. New York: Harper & Row, 1978-79. Neoevangelical.

Brunner, Emil. *Dogmatics*. 3 vols. Philadelphia: Westminster Press, 1959-62. Neoorthodox.

Calvin, John. *Institutes of the Christian Religion*. Ed. by John T. McNeill, 2 vols. Philadelphia: Westminster Press, 1936. Conservative, reformed, classic.

Frame, John M. *The Doctrine of God: A Theology of Lordship*. Phillipsburg, N.J.: P&R Publishing, 2002. Reformed, conservative covenant perspective. Interacts with philosophy of religion.

Grudem, Wayne. *Systematic Theology: An Introduction to Biblical Doctrine*. Grand Rapids: Zondervan, 1994. Conservative, Arminian, Charismatic.

Erickson, Millard. *Christian Theology*. Grand Rapids: Baker, 1983. Conservative, non-dispensational, premillennial.

Hodge, Charles. *Systematic Theology*. 3 vols. New York: Scribners, 1877. Eerdmans offers a reprint, 3 vols. Reformed, Postmillennial, Conservative.

Horton, Michael. *The Christian Faith: A Systematic Theology for Pilgrims on the Way*. Grand Rapids: Zondervan, 2011. Postmodern and interdenominational interactions

McGrath, Alister E. *Christian Theology: An Introduction*. Wiley-Blackwell; 5<sup>th</sup> ed., 2010. British, evangelical, interacts with philosophy.

Pannenberg, Wolfhart. *An Introduction to Systematic Theology*. Grand Rapids: Eerdmans, 1991. Succinct introduction to Pannenberg's massive 3-volume systematics

Reymond, Robert L. *A New Systematic Theology of the Christian Faith*. Nashville: Thomas Nelson, 1998.

Stiver, Dan. *Life Together in the Way of Jesus Christ: An Introduction to Christian Theology*. Waco: Baylor University Press, 2008. A modern Baptist perspective

There is great difference between the wisdom of an enlightened and devout man and the learning of a well-read and brilliant scholar, for the knowledge which flows down from divine sources is much nobler than that laboriously acquired by human industry.

--Thomas á Kempis, *The Imitation of Christ* 3:31

The End